

MAP LEGEND

See reverse side for detailed listings

- **Information**
- **Outdoor Activities**
- ★ **Civil War Sites**
- - - **Overmountain Victory Trail**
- - - **Mountains-to-Sea Trail**
- - - **Upper Yadkin Byway**
- - - **Leaf to Vine Scenic Byway**
- - - **N.C. Bike Route 2**
- - - **N.C. Bike Route 4**
- - - **Surry Scenic Bikeway**

For more information about the trails, byways and bike routes on this map, visit these websites:

- N.C. CIVIL WAR TRAILS**
www.civilwartrails.org
- OVERMOUNTAIN VICTORY TRAIL**
www.nps.gov/ovvi/
- MOUNTAINS-TO-SEA TRAIL**
www.ncparks.gov/About/trails_mst.php
www.ncmst.org
- N.C. SCENIC BYWAYS**
www.ncdot.org/travel/scenic/
- N.C. BIKE ROUTES**
www.ncdot.org/travel/mappubs/bikemaps

Funding provided by:



GOyadkinvalley.com

it starts with a river...

email: info@goyadkinvalley.com



Overmountain Victory Trail

The 330 mile long Overmountain Victory National Historic Trail stretches through North Carolina, South Carolina, Tennessee and Virginia. The trail traces the route taken by the Revolutionary War Overmountain Men patriot militia during their campaign of 1780 that took them over the Great Smoky Mountains to the Battle of King's Mountain in North Carolina. The Overmountain Men decisively defeated the loyalist militia garrisoned on King's Mountain. A reenactment of the historic journey takes place in the fall of each year.
www.nps.gov/ovvi



Stone Mountain State Park

The mountain from which this park takes its name is not immediately visible upon entering the park, but the magnificent 600-foot granite dome is well worth the wait. Test your fly-fishing skills in the park's more than 20 miles of designated trout waters, or hike one of the park's 16 miles of trails. Designated as a National Natural Landmark in 1975, the park offers more than 14,100 acres of mountain beauty opportunities for outdoor activities of all kinds.
www.ncparks.gov/visit/parks/stmo/main.php



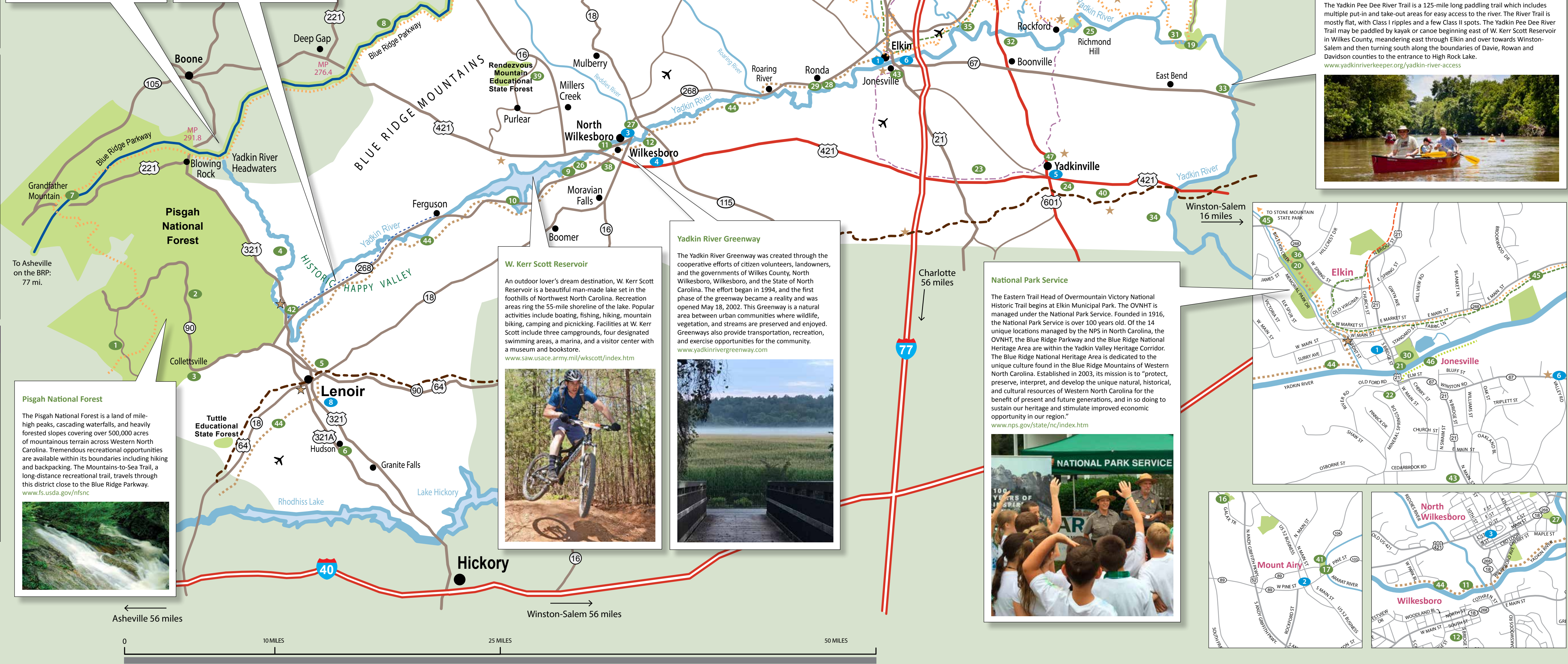
Mountains To Sea/Elkin Valley Trails

Coursing from Elkin to Stone Mountain State Park, the trail represents enormous effort by a large grass roots of volunteers who have added opportunities for hiking, mountain biking and horseback riding.
www.elkinvalleytrails.org/



Blue Ridge Parkway

Spanning 469 miles along the crest of the Blue Ridge Mountains, the Parkway runs from the Shenandoah National Park in Virginia to the Great Smoky Mountains National Park in North Carolina. For nearly 100 miles, the Blue Ridge Parkway skirts the western boundary of the Yadkin Valley from Linville Falls, just west of Lenoir, to Cumberland Knob near the Virginia state line.
www.blueridgeparkway.org/



Pilot Mountain State Park

Dedicated as a National Natural Landmark in 1976, Pilot Mountain rises more than 1,400 feet above the rolling countryside of the upper Piedmont plateau and is the centerpiece of Pilot Mountain State Park. Treat yourself to a horseback ride through the woods or challenge the river from raft or canoe. A seven-mile woodland corridor joins two sections of the park, each section offering a wealth of opportunities for outdoor fun. The mountain segment, which includes the two pinnacles, contains most of the visitor facilities. The more primitive river section centers around the lazy, meandering Yadkin River.
www.ncparks.gov/visit/parks/pimo/main.php



Yadkin River Trail Access

The Yadkin Pee Dee River Trail is a 125-mile long paddling trail which includes multiple put-in and take-out areas for easy access to the river. The River Trail is mostly flat, with Class I rapids and a few Class II spots. The Yadkin Pee Dee River Trail may be paddled by kayak or canoe beginning east of W. Kerr Scott Reservoir in Wilkes County, meandering east through Elkin and over towards Winston-Salem and then turning south along the boundaries of Davie, Rowan and Davidson counties to the entrance to High Rock Lake.
www.yadkinriverkeeper.org/yadkin-river-access



Yadkin River Greenway

The Yadkin River Greenway was created through the cooperative efforts of citizen volunteers, landowners, and the governments of Wilkes County, North Wilkesboro, Wilkesboro, and the State of North Carolina. The effort began in 1994, and the first phase of the greenway became a reality and was opened May 18, 2002. This Greenway is a natural area between urban communities where wildlife, vegetation, and streams are preserved and enjoyed. Greenways also provide transportation, recreation, and exercise opportunities for the community.
www.yadkinrivergreenway.com



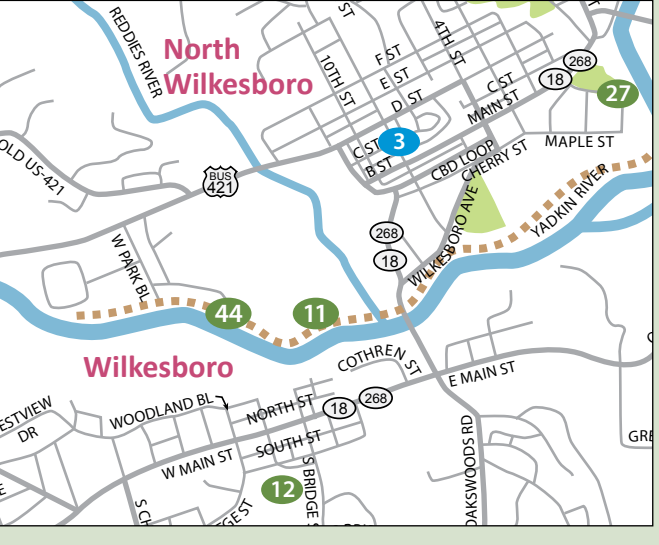
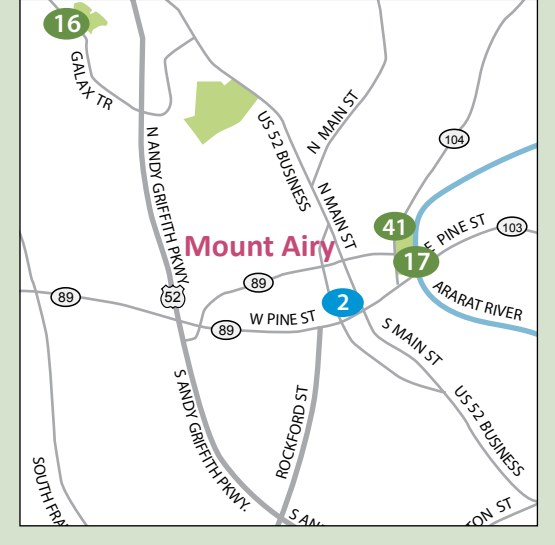
W. Kerr Scott Reservoir

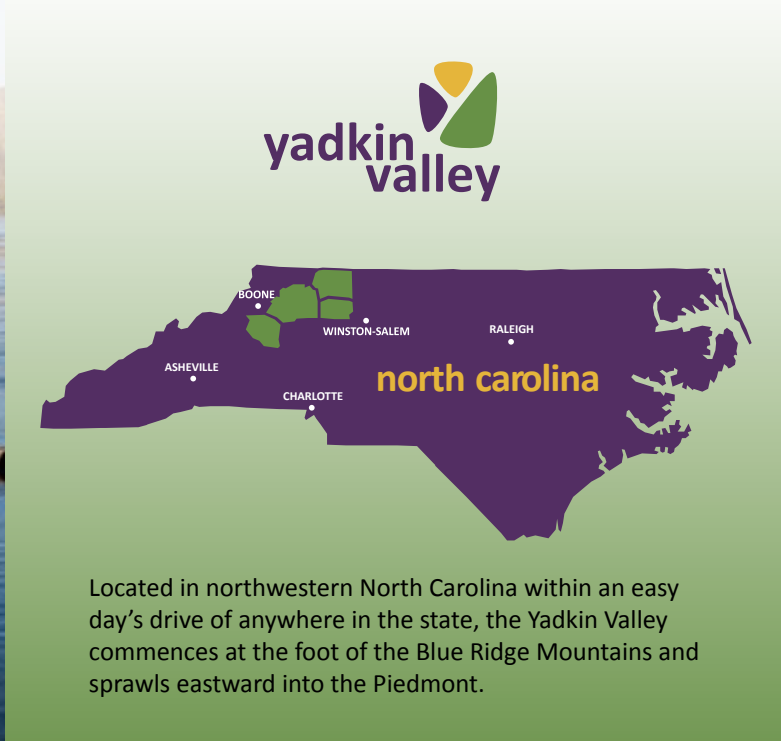
An outdoor lover's dream destination, W. Kerr Scott Reservoir is a beautiful man-made lake set in the foothills of Northwest North Carolina. Recreation areas ring the 55-mile shoreline of the lake. Popular activities include boating, fishing, hiking, mountain biking, camping and picnicking. Facilities at W. Kerr Scott include three campgrounds, four designated swimming areas, a marina, and a visitor center with a museum and bookstore.
www.saw.usace.army.mil/wkscott/index.htm



National Park Service

The Eastern Trail Head of Overmountain Victory National Historic Trail begins at Elkin Municipal Park. The OVNHT is managed under the National Park Service. Founded in 1916, the National Park Service is over 100 years old. Of the 14 unique locations managed by the NPS in North Carolina, the OVNHT, the Blue Ridge Parkway and the Blue Ridge National Heritage Area are within the Yadkin Valley Heritage Corridor. The Blue Ridge National Heritage Area is dedicated to the unique culture found in the Blue Ridge Mountains of Western North Carolina. Established in 2003, its mission is to "protect, preserve, interpret, and develop the unique natural, historical, and cultural resources of Western North Carolina for the benefit of present and future generations, and in so doing to sustain our heritage and stimulate improved economic opportunity in our region."
www.nps.gov/state/nc/index.htm





explore. engage. experience.

With abundant outdoor activities, local arts & crafts, charming bed and breakfasts and the exquisite food and wine offered at local restaurants, in the Yadkin Valley you have the makings of a great weekend getaway or family vacation.

In our part of the world, you can go at your own pace, stop at your favorite place, and see a little or a lot of a region bound together by a river for generations.

GOyadkinvalley.com

it starts with a river...

- hiking
biking
picnicking
camping
swimming
fishing
canoeing
kayaking
horseback riding

map your adventure.

Plan the route your fun will take with our map of the Yadkin Valley—colored and numbered markers on the map help you easily locate your destination.

- information centers
outdoor activities
cultural & historical sites

it starts with a river.

From its headwaters near the Blue Ridge Parkway's Thunder Hill Overlook, the Yadkin River flows over 200 miles southeast into South Carolina, making it one of the longest rivers in North Carolina.

Ancient Native Americans and European settlers made their homes near its fertile banks, the life-sustaining river providing not only water, but also a means for fishing and travel. Its waterpower drove gristmills, forges, and sawmills that spurred economic development. Today, fishing, canoeing, kayaking and rafting are favorite pastimes as the river meanders around towns, farms, forests and lush vineyards.



fun happens here.

If your idea of fun includes hiking, biking, kayaking and canoeing, the Yadkin Valley offers all of that and more. Visit shops, restaurants, galleries, and antique stores, take in a farmers market or festival, tour our vast array of wineries and sample award-winning wines, then spend the night at a historic bed and breakfast or hotel.

Here, you'll discover a thriving, vibrant region, proud of its history and heritage and welcoming you to partake in its bounty.

Photos by: Denise Manus, Joe Mickey, Julian Charles, Lynn Clark, Molly Brown

information

- 1 Yadkin Valley Chamber of Commerce & Visitor Center
2 Mount Airy Chamber of Commerce & Visitors Center
3 Wilkes Chamber of Commerce & Visitor Center
4 Northwest North Carolina Visitor Center
5 Yadkin County Chamber & Visitor Center
6 Jonesville Welcome Center
7 I-77N North Carolina Welcome Center
8 Caldwell County Chamber & Visitor Information Center
9 Pilot Mountain Visitor Center

trails & outdoor fun

- 1 GRANDFATHER RANGER DISTRICT TRAILS
2 JOHN'S RIVER TRAIL
3 JOHN'S RIVER GREENWAY
4 YADKIN RIVER TRAIL
5 HUDSON AREA PATHWAYS
6 CASCADE FALLS LOOP & TOMPKINS KNOB TRAIL

- 8 LUMP SUMMIT TRAIL
9 W. KERR SCOTT RESERVOIR MOUNTAIN TRAIL SYSTEM - Dark Mountain Park
10 WESTWOOD PARK
11 YADKIN RIVER GREENWAY

- 13 DOUGHTON PARK TRAILS
14 STONE MOUNTAIN STATE PARK TRAILS
15 CUMBERLAND KNOB TRAILS
16 WESTWOOD PARK
17 GRANITE CITY GREENWAY

- 20 ELKIN VALLEY TRAILS - MOUNTAINS-TO-SEA TRAIL/OVERMOUNTAIN VICTORY NATIONAL AND MOUNTAIN BIKING TRAIL SYSTEM
21 CRATER PARK
22 MINERAL SPRINGS BRANCH TRAIL
23 YADKIN MEMORIAL PARK AT LAKE HAMPTON
24 YADKIN COUNTY NATURE TRAIL

- 29 ROARING RIVER/RONDA ACCESS - Yadkin River Trail
30 CRATER PARK ACCESS - Yadkin River Trail
31 SHOALS ROAD CANOE ACCESS - Yadkin River Trail
32 SHORE ACCESS - Yadkin River Trail
33 DONNAHA ACCESS - Yadkin River Trail
34 HUNTSVILLE ACCESS - Yadkin River Trail
35 BURCH STATION AT MITCHELL RIVER - Yadkin River Trail

- 39 RIVERSIDE PARK/ARARAT RIVER GREENWAY TRAIL
40 YADKIN COUNTY PARK
41 HAPPY VALLEY GREENWAY/YADKIN RIVER TRAIL
42 LILA SWAIM PARK
43 OVERMOUNTAIN VICTORY NATIONAL HISTORIC TRAIL

- 46 JONESVILLE GREENWAY TRAIL
47 ELKIN & ALLEGHENY RAIL TRAIL/MOUNTAINS-TO-SEA TRAIL

- information
picnicking
hiking
camping
biking
swimming
scenic area
water activities
fishing
disc golf
historic site

PLEASE CALL AHEAD TO VERIFY HOURS OF OPERATION